

**FULLY FITTED
GROUND FLOOR
OFFICE/SHOWROOM
FOR RENT**

**BARTS SQUARE
60 BARTHOLOMEW
CLOSE
EC1**

BELCOR

CITY FRINGE REAL ESTATE

1,459 SQ FT

DESCRIPTION

This stylish self-contained ground floor office/showroom comes fully fitted with 12 desks, a meeting room, 2 phone booths, a kitchenette and a hot-desking/breakout area. 60 Bartholomew has its own self-contained entrance and full height floor to ceiling windows offering excellent natural light and branding opportunities. This unit would be of interest to a range of office and showroom occupiers.

AMENITIES



AIR CONDITIONING



FULLY FITTED



SHOWERS



EXCELLENT NATURAL LIGHT



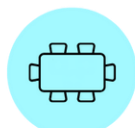
FLOOR TO CEILING GLAZING



EXCELLENT TRANSPORT LINKS



24 HOUR ACCESS



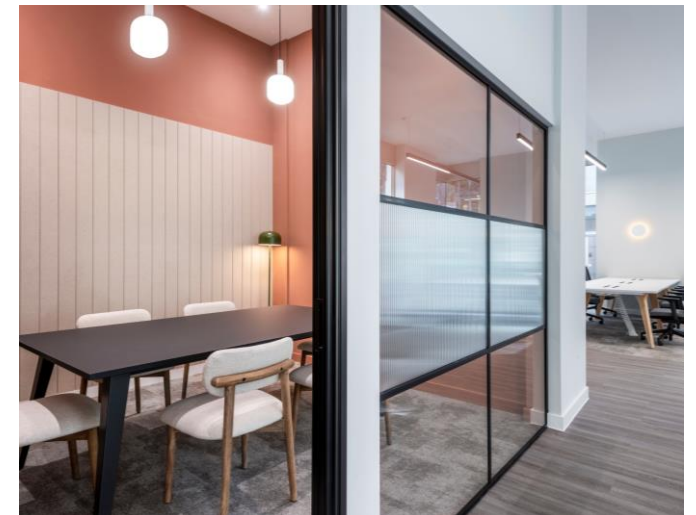
MEETING ROOMS



DDA COMPLIANT

ELEGANTLY FITTED OFFICE/SHOWROOM MOMENTS FROM FARRINGDON STATION





TRANSPORT

Farringdon - 4 mins



Barbican - 4 mins



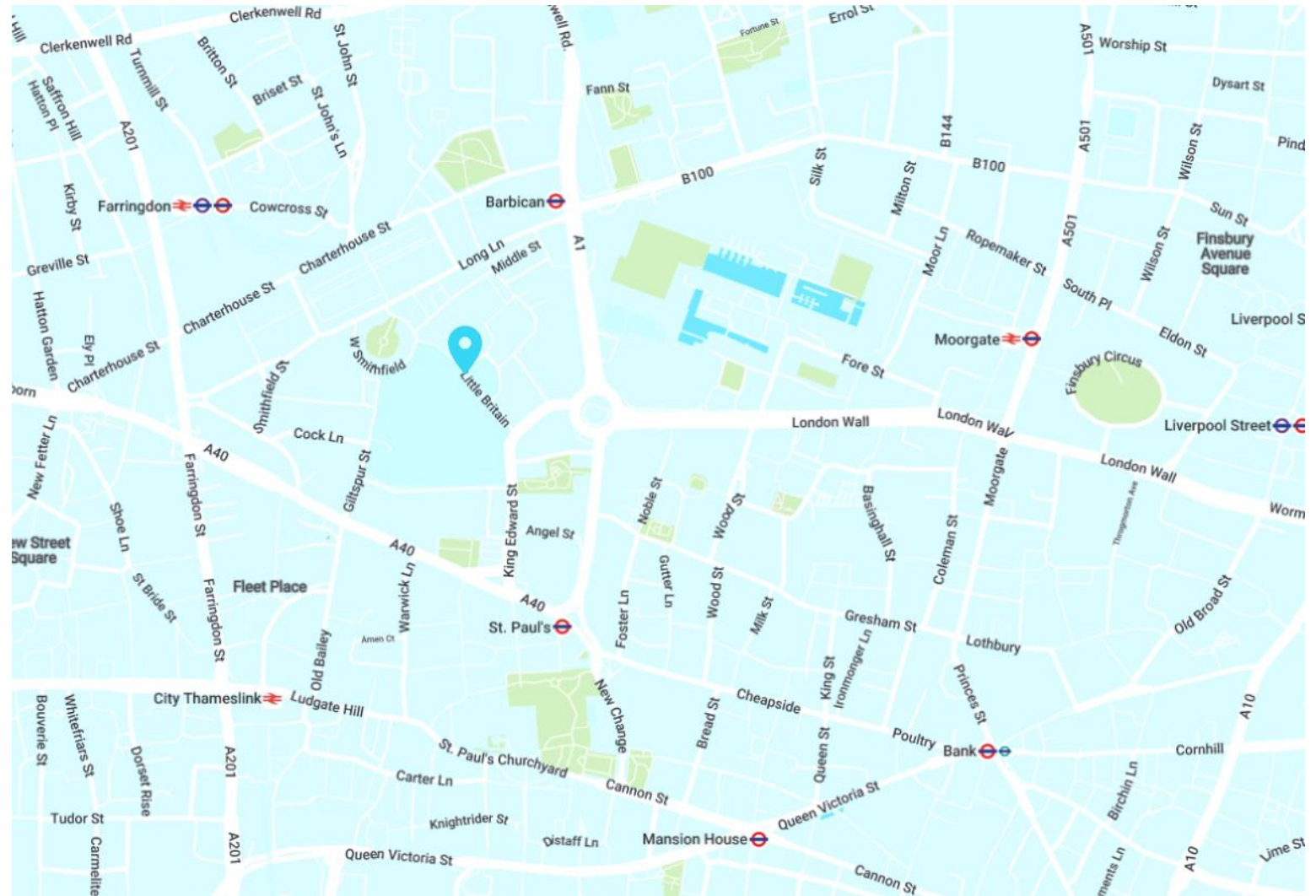
St Paul's - 10 mins



AREA

The property is located on Bartholomew Close, just a stone's throw from a vibrant mix of independent restaurants, cafes, bars, and shops. The area offers a fusion of commerce, culture, and connectivity. It is 150m from Farringdon East (Elizabeth line station) and approximately 250m from Farringdon Station. Barbican and St Paul's Station are just a short walk away.

LOCATION



AVAILABILITY

UNIT	SIZE (SQ FT)	STATUS	RENT (PSF)	RATES (PSF)	SERVICE CHARGE (PSF)	TOTAL (PCM)
Ground Floor	1,459	Available	£59.50	£23.00	£2.80	£10,371

LEASE

A new lease to be contracted outside the Landlord & Tenant Act.

TIMING

Available immediately.

CONTENT

View on our website



RATES

The rates given are a guide and Interested parties should make their own enquiries with the local authority.

VAT

VAT is applicable.

VIEWINGS VIA JOINT SOLE AGENTS

BELCOR

020 7375 3444
agency@belcor.london
www.belcor.london

PILCHER

020 7399 8600
info@pilcher.london
www.pilcher.london

TEAM

OLI COHEN PARTNER



oc@belcor.london
07740 110 063

DANIEL JACKSON AGENCY



dj@belcor.london
07725 203 254